

PRESENTING



The private serviced suites providing extraordinary hospitality by exclusive brands, unparalleled services.

THE CONCEPT

A WORLD OF LUXURY, TAILORED FOR THE DISCERNING

Imagine living your life in uber ultimate comfort of a Studio Suite.



THE OBEROI GRUGAON



NAKHEEL MALL & PALM
TOWER DUBAI



JEWEL CHANGI AIRPORT
SINGAPORE



FUNAN – SINGAPORE



DESIGNED BY

M3M My Den, designed by the globally recognized...

RSP ARCHITECTS SINGAPORE.



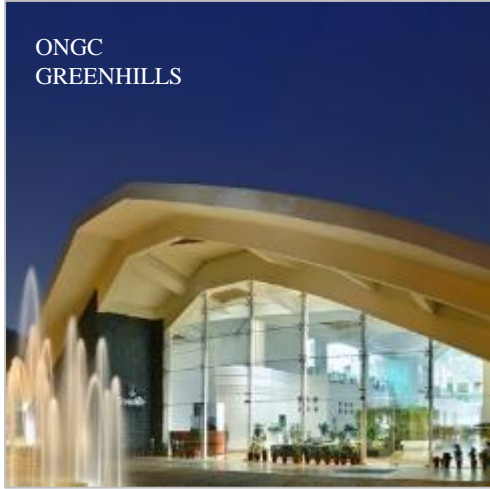
OBEROI TOWERS
MUMBAI



PARK TOWERS
DUBAI



FIFC
MUMBAI



ONGC
GREENHILLS



HOTEL FAIRMONT
AL BAHR



CONSTRUCTION PARTNER



Shapoorji Pallonji has designed and built diverse civil and structural engineering landmarks across the world.

clients in over 60 countries, they have delivered complex and challenging projects for over 150 years.

ACCESS TO WORLD

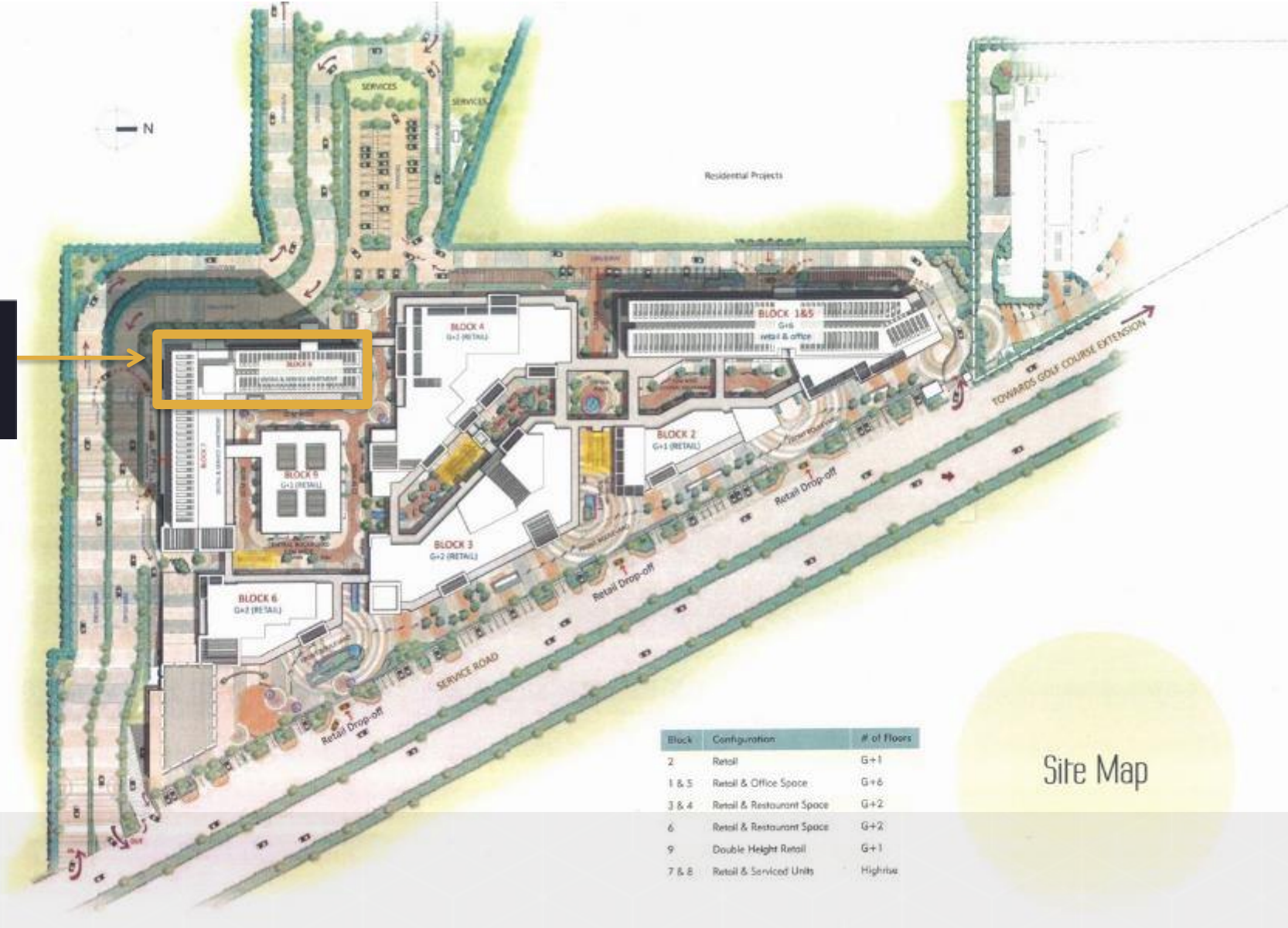
RIGHT OUTSIDE YOUR SUITE

- HOSPITALS** : Medanta Medicity, Marengo Asia, Artemis, Fortis, Max.
- HI- END RETAIL** : M3M Urbana, M3M IFC M3M Cosmopolitan, South Point Mall, Arcadia, Rodeo Drive etc.
- HYPER MARKETS** : Reliance Smart Bazaar, More, Sodhi's Super Market, Deerika, Spar, etc.
- MOVIE THEATRES** : PVR, Wave Cinemas, INOX Cinemas, Cinopolis, Dhishoom Cinemas SRS Cinemas, Carnival Cinemas.
- FINE DINE & BARS** : Karigari, Punjab Grills, The Beer Café, Teamo, Mittyesque, IFC Social, Molecule, Starbucks & many more.

A Royal Retreat

Surrounded by Everything You Would Ever Want...

Site Plan



* Other developments are indicative, subject to change

The Unique Proposition of M3M My Den

- Integral part of nearly 17 acre multi-use commercial/ retail complex
- Complex with one of the largest frontage in Gurgaon (500 mtrs.)
- Walk-to-work complex
- Optimal space planning
- Ultimate location and connectivity



M3M
MY DEN

Location Advantages

- Just 30 minute drive from Delhi International Airport.
- Strategically linked to all major Business Hubs & Retail destinations.
- Located at the nexus of city life and scenic the serenity of Golf Course Extension road & close to major Hubs of the city situated on 60 metre wide main arterial Sector road.
- Within arm's reach of prestigious adobes M3M Golf Estate, Trump Tower, M3M Merlin, Up Town, IFC, Urbana Premium & Grand Hyatt, Double Tree By Hilton, Sports Club & many more...
- Located on the Metro corridor, offering fast, convenient and comfortable connectivity to Delhi, easy accessibility to NH8 as well as to South Delhi via Gurgaon Faridabad expressway.



URBANA PREMIUM



URBANA RETAIL



IFC



M3M My Den – Key Facts

1 & 2 BHK FULLY FURNISHED PRIVATE SUITES

Total units – 178

PRE-RENTED UNITS





Grand Entrance Lobby with Exclusive Drop off

ACTUAL IMAGE

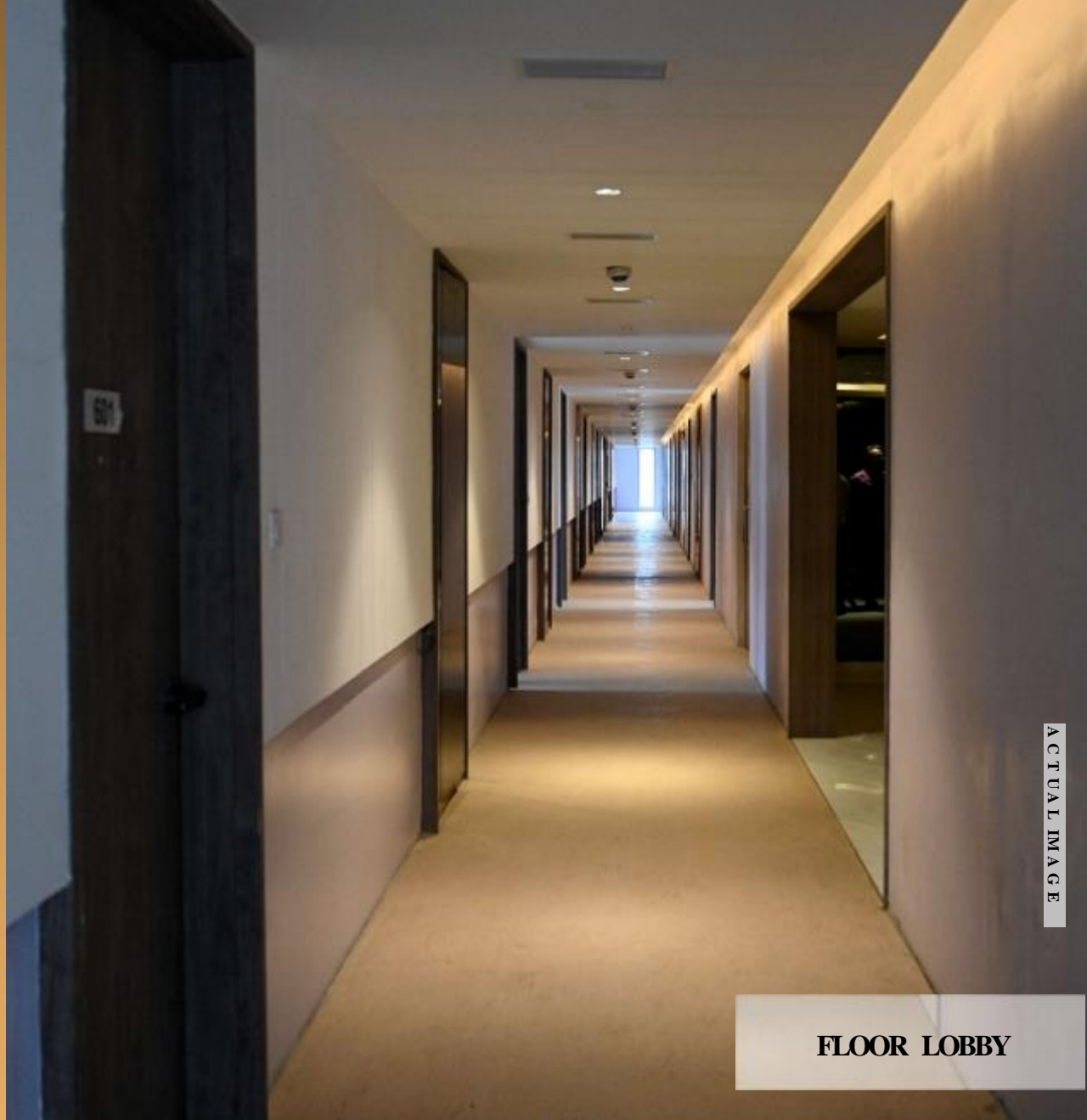


GRAND DOUBLE HEIGHT ENTRANCE LOBBY



ACTUAL IMAGE

LIFT LOBBY



ACTUAL IMAGE

FLOOR LOBBY

PRIVATE SERVICED SUITES VIEW

FULLY FURNISHED 1 & 2 BHK PRIVATE SUITES





ACTUAL IMAGE







Exclusive Sky Bridge

At level 4 your key to the world of Amenities like Business Centre, Restaurant, Cocktail Lounge with outdoor deck, Lounge Café, Alfresco Dining, All day snooker billiards and comfort zones.



THE INSIGNIA

HEALTH CLUB | GYM | SPA



GYM

Business Centre

Up-to-date Smart-Biz-Hub with all modern amenities and resources





“The Dutchess”
Fine Dining Restaurant





**“Queen’s Terrace”
@ 2nd Floor**

Landscaped terrace coffee shop,
a perfect place to relax in the outdoors !



“King’s Court”

A toast to high life!





Rooftop Infinity Pool



Pricing & Payment Plans

Pricing

BSP

15,450/- Per Sq. Ft.

Other Charges & GST extra as applicable

SUITES LAYOUT PLAN

Spaces Crafted to complement your signature style !



BLOCK 08 | TYPE 01 | SERVICE APARTMENT



BLOCK 08 | TYPE 02 | SERVICE APARTMENT

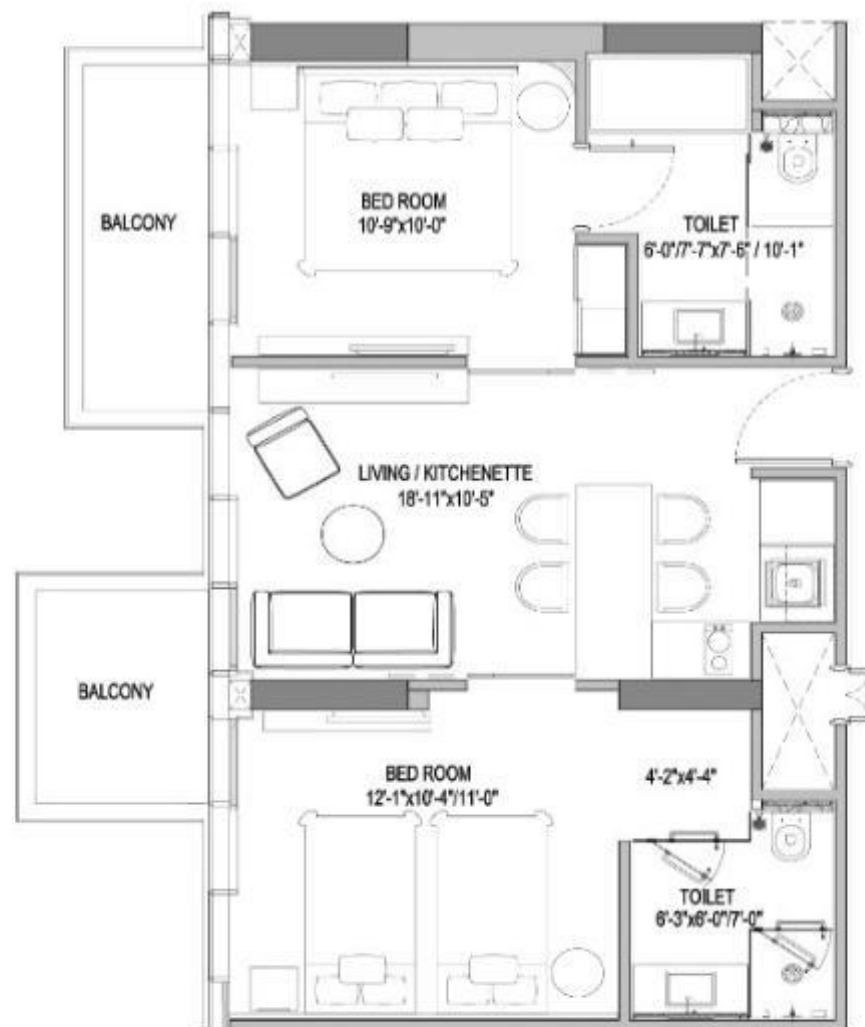


BLOCK 08 | TYPE 04 | SERVICE APARTMENT





BLOCK 08 | TYPE 06 | SERVICE APARTMENT



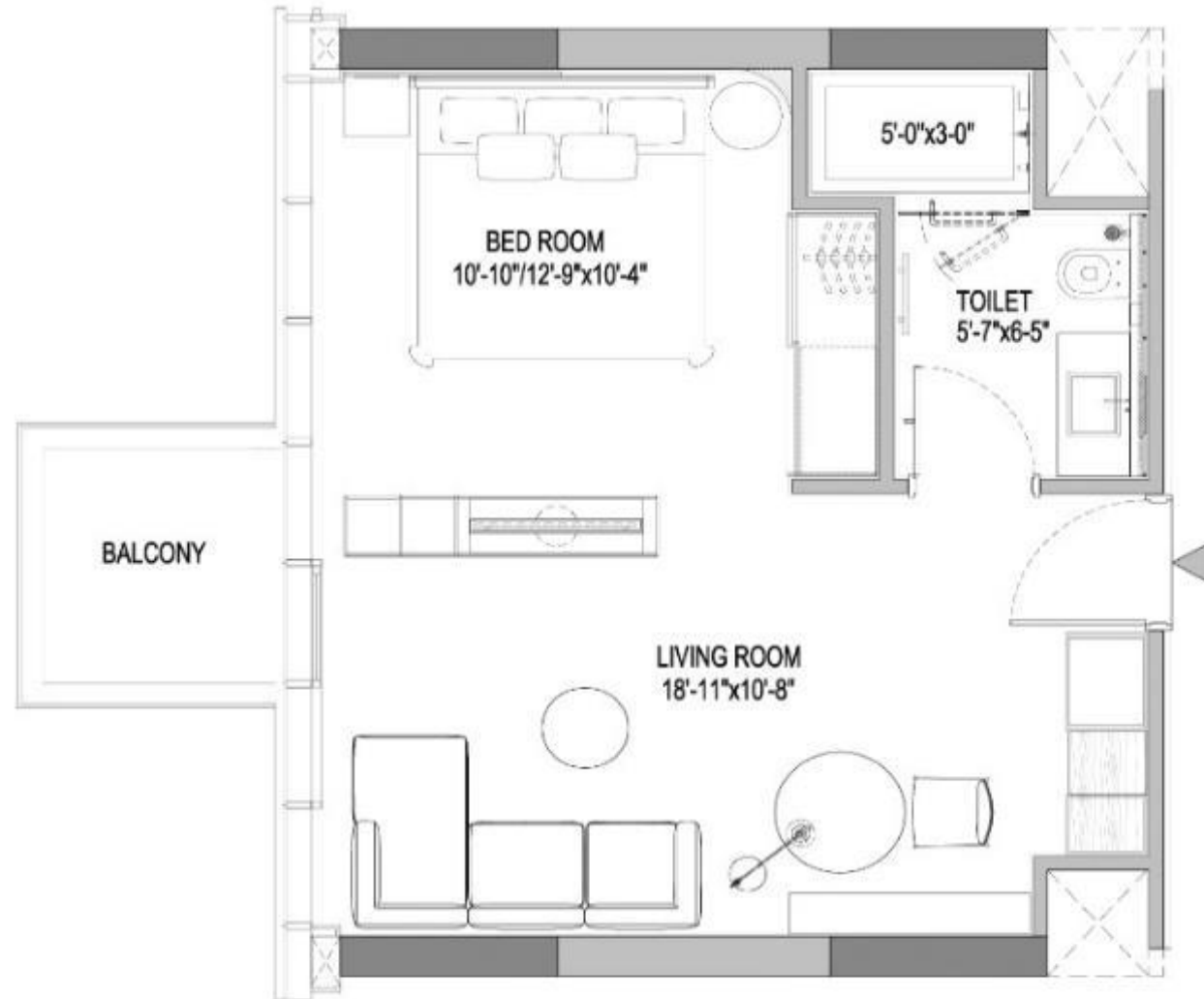


BLOCK 08 | TYPE 07 | SERVICE APARTMENT



BLOCK 08 | TYPE 08 | SERVICE APARTMENT







M3M "My Den" Project is registered with Singapore's Regulatory Authority under the Real Estate Development (Resale) Act (RERA) and is a part of the development of a residential building. The project is located at 11, 12, 13, 14, 15, 16, 17, 18, 19, 20, 21, 22, 23, 24, 25, 26, 27, 28, 29, 30, 31, 32, 33, 34, 35, 36, 37, 38, 39, 40, 41, 42, 43, 44, 45, 46, 47, 48, 49, 50, 51, 52, 53, 54, 55, 56, 57, 58, 59, 60, 61, 62, 63, 64, 65, 66, 67, 68, 69, 70, 71, 72, 73, 74, 75, 76, 77, 78, 79, 80, 81, 82, 83, 84, 85, 86, 87, 88, 89, 90, 91, 92, 93, 94, 95, 96, 97, 98, 99, 100, 101, 102, 103, 104, 105, 106, 107, 108, 109, 110, 111, 112, 113, 114, 115, 116, 117, 118, 119, 120, 121, 122, 123, 124, 125, 126, 127, 128, 129, 130, 131, 132, 133, 134, 135, 136, 137, 138, 139, 140, 141, 142, 143, 144, 145, 146, 147, 148, 149, 150, 151, 152, 153, 154, 155, 156, 157, 158, 159, 160, 161, 162, 163, 164, 165, 166, 167, 168, 169, 170, 171, 172, 173, 174, 175, 176, 177, 178, 179, 180, 181, 182, 183, 184, 185, 186, 187, 188, 189, 190, 191, 192, 193, 194, 195, 196, 197, 198, 199, 200, 201, 202, 203, 204, 205, 206, 207, 208, 209, 210, 211, 212, 213, 214, 215, 216, 217, 218, 219, 220, 221, 222, 223, 224, 225, 226, 227, 228, 229, 230, 231, 232, 233, 234, 235, 236, 237, 238, 239, 240, 241, 242, 243, 244, 245, 246, 247, 248, 249, 250, 251, 252, 253, 254, 255, 256, 257, 258, 259, 260, 261, 262, 263, 264, 265, 266, 267, 268, 269, 270, 271, 272, 273, 274, 275, 276, 277, 278, 279, 280, 281, 282, 283, 284, 285, 286, 287, 288, 289, 290, 291, 292, 293, 294, 295, 296, 297, 298, 299, 300, 301, 302, 303, 304, 305, 306, 307, 308, 309, 310, 311, 312, 313, 314, 315, 316, 317, 318, 319, 320, 321, 322, 323, 324, 325, 326, 327, 328, 329, 330, 331, 332, 333, 334, 335, 336, 337, 338, 339, 340, 341, 342, 343, 344, 345, 346, 347, 348, 349, 350, 351, 352, 353, 354, 355, 356, 357, 358, 359, 360, 361, 362, 363, 364, 365, 366, 367, 368, 369, 370, 371, 372, 373, 374, 375, 376, 377, 378, 379, 380, 381, 382, 383, 384, 385, 386, 387, 388, 389, 390, 391, 392, 393, 394, 395, 396, 397, 398, 399, 400, 401, 402, 403, 404, 405, 406, 407, 408, 409, 410, 411, 412, 413, 414, 415, 416, 417, 418, 419, 420, 421, 422, 423, 424, 425, 426, 427, 428, 429, 430, 431, 432, 433, 434, 435, 436, 437, 438, 439, 440, 441, 442, 443, 444, 445, 446, 447, 448, 449, 450, 451, 452, 453, 454, 455, 456, 457, 458, 459, 460, 461, 462, 463, 464, 465, 466, 467, 468, 469, 470, 471, 472, 473, 474, 475, 476, 477, 478, 479, 480, 481, 482, 483, 484, 485, 486, 487, 488, 489, 490, 491, 492, 493, 494, 495, 496, 497, 498, 499, 500, 501, 502, 503, 504, 505, 506, 507, 508, 509, 510, 511, 512, 513, 514, 515, 516, 517, 518, 519, 520, 521, 522, 523, 524, 525, 526, 527, 528, 529, 530, 531, 532, 533, 534, 535, 536, 537, 538, 539, 540, 541, 542, 543, 544, 545, 546, 547, 548, 549, 550, 551, 552, 553, 554, 555, 556, 557, 558, 559, 560, 561, 562, 563, 564, 565, 566, 567, 568, 569, 570, 571, 572, 573, 574, 575, 576, 577, 578, 579, 580, 581, 582, 583, 584, 585, 586, 587, 588, 589, 590, 591, 592, 593, 594, 595, 596, 597, 598, 599, 600, 601, 602, 603, 604, 605, 606, 607, 608, 609, 610, 611, 612, 613, 614, 615, 616, 617, 618, 619, 620, 621, 622, 623, 624, 625, 626, 627, 628, 629, 630, 631, 632, 633, 634, 635, 636, 637, 638, 639, 640, 641, 642, 643, 644, 645, 646, 647, 648, 649, 650, 651, 652, 653, 654, 655, 656, 657, 658, 659, 660, 661, 662, 663, 664, 665, 666, 667, 668, 669, 670, 671, 672, 673, 674, 675, 676, 677, 678, 679, 680, 681, 682, 683, 684, 685, 686, 687, 688, 689, 690, 691, 692, 693, 694, 695, 696, 697, 698, 699, 700, 701, 702, 703, 704, 705, 706, 707, 708, 709, 710, 711, 712, 713, 714, 715, 716, 717, 718, 719, 720, 721, 722, 723, 724, 725, 726, 727, 728, 729, 730, 731, 732, 733, 734, 735, 736, 737, 738, 739, 740, 741, 742, 743, 744, 745, 746, 747, 748, 749, 750, 751, 752, 753, 754, 755, 756, 757, 758, 759, 760, 761, 762, 763, 764, 765, 766, 767, 768, 769, 770, 771, 772, 773, 774, 775, 776, 777, 778, 779, 780, 781, 782, 783, 784, 785, 786, 787, 788, 789, 790, 791, 792, 793, 794, 795, 796, 797, 798, 799, 800, 801, 802, 803, 804, 805, 806, 807, 808, 809, 810, 811, 812, 813, 814, 815, 816, 817, 818, 819, 820, 821, 822, 823, 824, 825, 826, 827, 828, 829, 830, 831, 832, 833, 834, 835, 836, 837, 838, 839, 840, 841, 842, 843, 844, 845, 846, 847, 848, 849, 850, 851, 852, 853, 854, 855, 856, 857, 858, 859, 860, 861, 862, 863, 864, 865, 866, 867, 868, 869, 870, 871, 872, 873, 874, 875, 876, 877, 878, 879, 880, 881, 882, 883, 884, 885, 886, 887, 888, 889, 890, 891, 892, 893, 894, 895, 896, 897, 898, 899, 900, 901, 902, 903, 904, 905, 906, 907, 908, 909, 910, 911, 912, 913, 914, 915, 916, 917, 918, 919, 920, 921, 922, 923, 924, 925, 926, 927, 928, 929, 930, 931, 932, 933, 934, 935, 936, 937, 938, 939, 940, 941, 942, 943, 944, 945, 946, 947, 948, 949, 950, 951, 952, 953, 954, 955, 956, 957, 958, 959, 960, 961, 962, 963, 964, 965, 966, 967, 968, 969, 970, 971, 972, 973, 974, 975, 976, 977, 978, 979, 980, 981, 982, 983, 984, 985, 986, 987, 988, 989, 990, 991, 992, 993, 994, 995, 996, 997, 998, 999, 1000.

Proposed Specifications & Finishes

Living Room/ Bedroom

Walls: Plastic Emulsion Paint with Roller Finish
Floors: Imported Laminated wooden flooring
Doors: Skin Door Shutter/ Flush Shutter with Wooden Door Frame
Windows : Powder coated or Anodized Aluminum glazing
Ceiling : Plastic Emulsion Paint
Furniture & Appliances : Double Bed (with Mattress and Bed Sheets) with Side Tables , 2+1 Seater Sofa Set, Coffee Table, Dining Chairs ,LCD/LED TV with Console, Wardrobe with Working Desk.
Accessories : Curtains/ Blinds, Lamp Stand/ Lamp Shade, Planters.

Balcony

Floors: Anti-skid/Non-slippery tiles

Kitchenette

Walls: 2' high tiles above Counter & Balance Plastic Emulsion Paint
Floors: Ceramic/ Vitrified tiles
Ceilings: Plastic Emulsion Paint
Kitchen Cabinet with Polished Granite counter with SS sink and sink mixer
Appliances : Refrigerator, Induction Cook Top, Microwave, RO Water purifier

Toilet

Walls: Combination of Tile Dado, Mirror & Plastic Emulsion Paint
Floors: Anti skid tiles
Doors: Skin Door Shutter/ Flush Shutter with Wooden Door Frame
Ceilings: False Ceiling with Paint
Granite/marble counter with International Brand Sanitary fixtures and CP fittings
Accessories : Towel Rail/ Ring, Robe Hooks, Hairdryer

Proposed Specifications & Finishes

Lift Lobbies

Walls: Selected stone cladding and Oil bound Distemper

Floors: Combination of Natural Stone & tiles Stainless Steel finished lift doors

Ceiling : False Ceiling

Air-conditioned Ground Floor Lobby

Common Amenities

Infinity Edge Swimming Pool with Change Rooms

World class Gymnasium

All Day Dining Restaurant

Bar & Lounge

AL Fresco Dining

Business Centre

Snooker/ Billiards Room

Steam Room

Laundromat

Staircases

Walls: Cement plaster with paint

Floors: Kota in tread and risers or exposed RCC

Doors: Steel fire doors/fire resistant shutter

Windows: Powder Coated or Anodized Aluminum glazing

Ceilings: Cement plaster with paint

Electrical Equipment

Ceiling fans & Light fittings Air-conditioned Service Apartments Hot water supply in Toilet/ Geyser Telephone, TV & Power Outlets

THANK YOU

