

M3M
ALTITUDE
— AT **golfestate** —

A Life
ABOVE
Everything
ELSE



An Experience That
Elevates Your Stature
To A New High



An Experience
That Is Above
The Rest






An Experience
That Sets You Apart
From Crowd





And Is Inspired By
The Tranquillity
Of Nature





An Oasis Of Luxury Amidst The Poshest Neighbourhood Of Gurugram

Indulge in a realm of unparalleled luxury, where every facet surpasses the bounds of your imagination.

This isn't just a project; it's an exquisite masterpiece harmoniously nestled within the esteemed landscape of our flagship golf development in Gurugram.





A Glimpse Into The Journey Of A Masterpiece

01

The Inspiration

02

Design Philosophy

03

The Location

04

The Icon

05

The Arrival Experience

06

The Living Experience

07

The Distinction

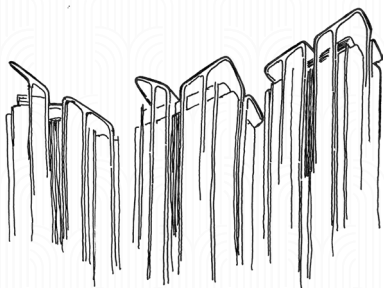




THE
INSPIRATION

O I

Inspired By The Fluidity Of Water



The facade design draws inspiration from the graceful cascading movement of waterfalls. It elegantly mirrors the descent of water over a steep drop, employing white ribbons to delineate the journey from the cascading point to the base. Design element accentuates the fluidity and movement, while louvers and mesh screens further amplify the verticality and dynamic essence of tumbling water, resulting in a visually captivating representation of nature's beauty.





DESIGN
PHILOSOPHY



Maestros Behind The Marvel



Jonas Upton-Hansen
Founding Director



Ricardo Mateu
Director

uha

Founded in London in 2011, UHA is a London based architecture design studio with 7 global offices across 6 time zones. UHA London is one of the most awarded architecture design studio.



A Name Behind Iconic Projects Across The Globe



Sadro Residencias | Mexico



Al Fujairah | Dubai



Infinity Towers | Cyprus



Qingdao Waterfront | China

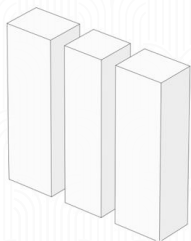


**UHA Designed M3M
Projects on the Big Screen**

Oscar-nominated film *The White Tiger* starred four of M3M Projects designed by UHA London.

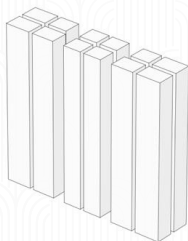


A Design Excellence



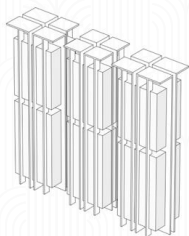
1

Basic Massing



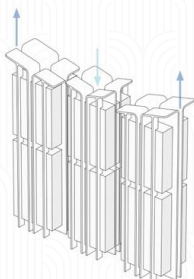
2

Break Down The Mass Into
Slender Vertical Volumes



3

Express Facade Verticality



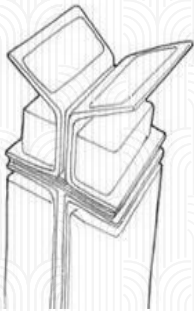
4

Create Iconic Architecture

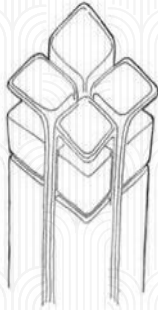
Consisting of three meticulously designed towers, this development embodies opulence, refinement, and exclusivity, providing discerning individuals with a lifestyle unparalleled in its grandeur.



The Last One In The Trinity Of Icons



DELIVERED:
M3M LATITUDE



DELIVERED :
M3M ST. ANDREWS



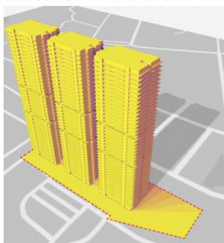
M3M ALTITUDE

The crowning features of these towers serve as unmistakable landmarks, showcasing extraordinary architectural feats and an irresistible charm. The iconic M3M St. Andrews then M3M Latitude and now prepare yourself to be awe-struck by the epitome of luxury living.

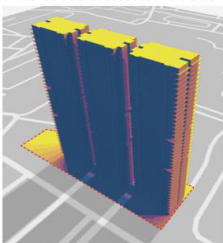


The Sky, The Sun and You

Winter Solstice - December 21

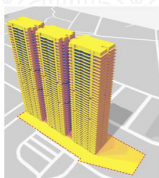


01 South East View

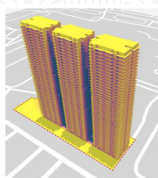
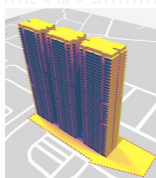
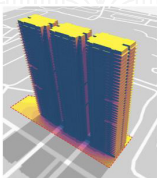


02 North West View

Autumn/Spring Equinox - September 22
/March 20



01 South East View



02 North West View

Dive into the meticulous solar study unveiling the graceful dance of sunlight upon M3M Altitude's glorious towers, illuminating every facet of their architectural brilliance.

Explore how the strategic positioning of our structures harnesses the sun's movement to create dynamic interplays of light and shade, crafting an ambiance of unparalleled elegance.

Witness innovation and sustainability converge as our design seamlessly integrates with nature's rhythm, offering residents a harmonious living experience bathed in natural radiance.



Rising In Our Flagship Golf Development

An Ecosystem Curated With Best
Of The Lifestyle.



ACTUAL IMAGE



200

Amenities

2 Lakh*

Sq. Ft.

(18580.60 Sq. M.)

Of Club Area

50000*

Sq. Ft.

(4645.15 Sq. M.)

Of Sports Amenities

6

Clubhouses

6

Restaurants

5

Pools

5

Fitness Centres



PRESENTING

M3M
ALTITUDE
— AT **golfestate** —



The Most
Expensive Project On
Golf Course Road Extn.



A New Dawn Of Luxury Is Rising

Ultra Luxury Suites &
Skyline Pentsuites





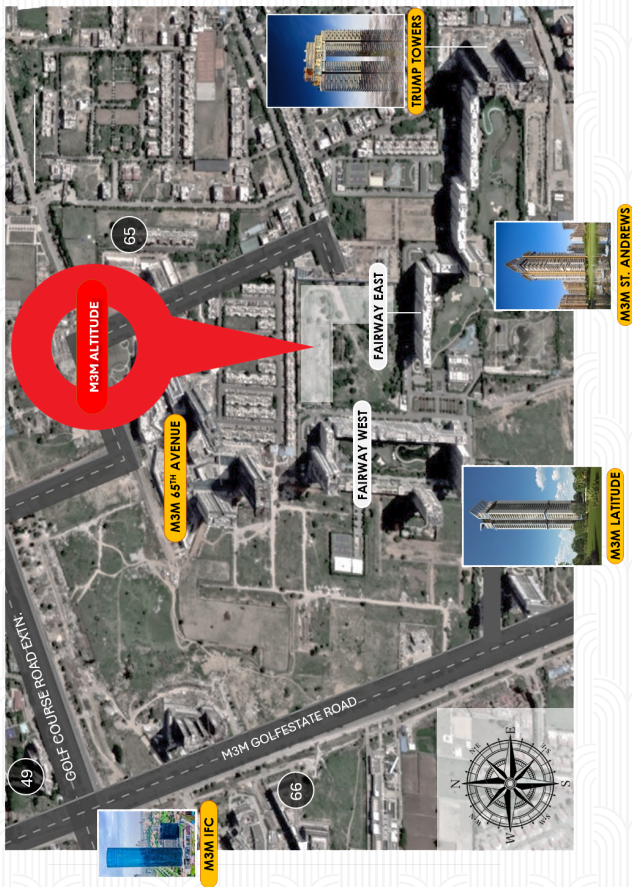
THE
LOCATION

OR

Located In The Most Posh Locale Of Gurugram

Come home to Delhi NCR's most affluent neighbourhood. Located in the most sought-after location that is a unique blend of cosmopolitan living, prime locality and a luxury urban lifestyle.





Right next to most affluent addresses: M3M Golfestate, M3M Latitude, M3M St. Andrews, M3M Polo Suites, Trump Towers, etc.

Home to the top multinational corporates, gastronomic experiences, entertainment & lifestyle avenues.





Access from 2 entrances one from Golf Course Road Extn.
and one from Golfestate Road.





THE
ICON

04

Adding Brilliance To City's Skyline



An unparalleled façade design, where every line, exudes luxury and refinement. Standing tall at approx. 140 mtrs. and is a feat of modern engineering.

Experience unparalleled privacy and exclusivity in a low-density project.



A Beacon Of Elegance And Authority



Standing tall atop the tower, the crown gleams with an aura of sophistication and power, casting its majestic presence over the city below. Its intricate design, captivates all who behold it, symbolizing not just luxury, but also a sense of regal authority.





THE
ARRIVAL
EXPERIENCE

05

Where You Arrive And Never Want To Leave



Vehicular drop-offs at lower ground level.

Exclusive services such as doormen, butlers, valet attendants
and car service with on-call private drivers.



Grandeur At Every Step



ARTISTIC IMPRESSION

TOWER ENTRANCE

Prepare to be dazzled as you are greeted by a symphony
of elegance and architectural brilliance.
Welcome to a lifestyle beyond compare.



Wait For No One, When You Own An Altitude



ARTISTIC IMPRESSION

A GRAND DOUBLE-HEIGHT LOBBY

Twice the homecoming experience with the grandeur of two lobbies - one in the lower ground level and one at ground level.

Each lobby is enveloped by serene landscaping and sit-out areas at the stilt level.



Move Up To Your Abode With The Blink Of An Eye

ARTISTIC IMPRESSION

Exclusive high-speed elevators for every suite.

Running at a speed of 4m per second.





THE
LIVING
EXPERIENCE



Finesse In Every Detail



Impeccably curated and thoughtfully designed suites offer a seamless blend of luxury and functionality. Each suite provides residents with a captivating visual experience and ample ventilation, ensuring a flawless living environment that fulfills your every comfort.

4.5 BHK + S ULTRA-LUXURY SUITES
— & SKYLINE PENTSUITES —



Revel In Sweeping Panoramic Views



STOCK IMAGE

Large wrap-around party decks serve as extended lifestyle spaces that reflect your taste.

Every suite offers 270-degree city views synonymous with luxury and opulence.





THE
DISTINCTION

07

It Isn't
Just About Living
It's An Experience That
Takes Your Breath Away



Few Experiences
Are Unforgettable,
Especially The Ones
At The Top



Live

THE LARGEST AIRCLUB

Experience
In Gurugram



ARTISTIC IMPRESSION



A Perfect Ecosystem



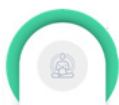
For Every Desire Of
Live, Work, Leisure And More..



Connecting Different Aspect Of Lifestyle And Leisure



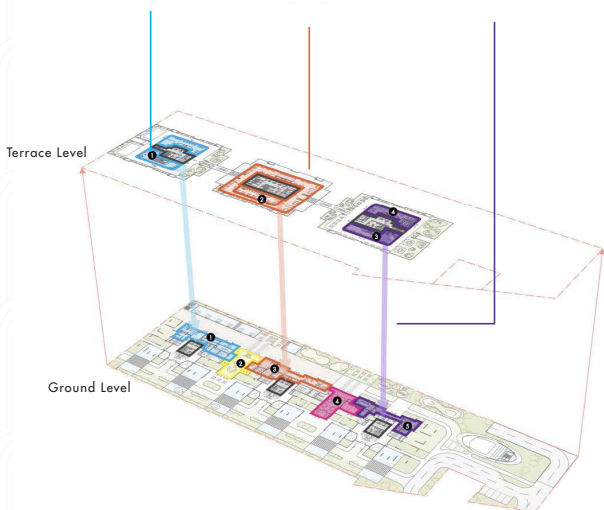
Wellness Link



Leisure Link



Business Link



The club's amenities are distributed across the ground floor and the rooftop, capable of operating separately yet linked by elevators.

Amenities within each tower are paired based on their nature:

The Spa is linked with the Gym.

The Family Zone with the Lagoon Restaurant.

The Business Club with both the Bar and Executive Lounge.



The Largest Interconnected Sky Experience In Gurugram



ARTISTIC IMPRESSION

Glass Air Bridges linking AirClub atop majestic towers.

1,25,000 Sq. Ft. (11612.88 Sq. M.) of club amenities.



A Beacon Of Elegance And Authority

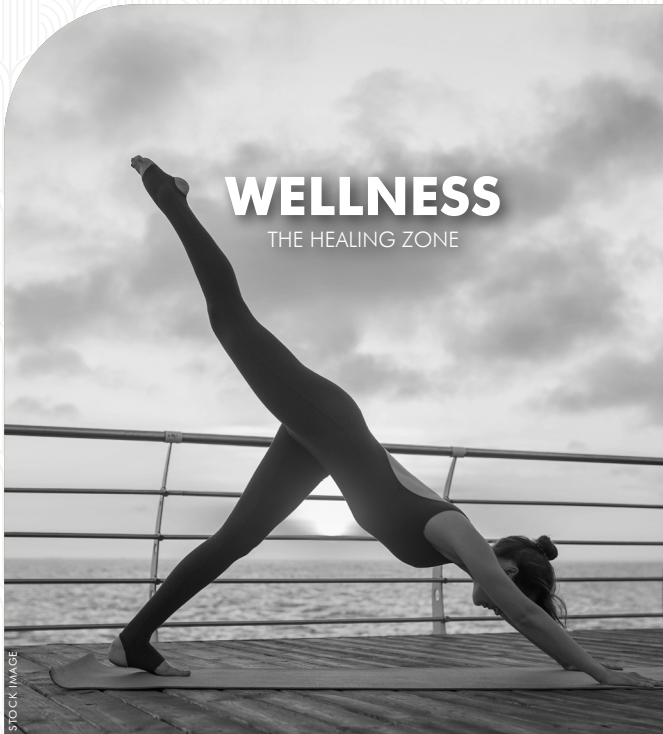


The Crowning Glory that is set to become the beacon of
luxury, adorned by a waterfall design.



WELLNESS

THE HEALING ZONE



STOCK IMAGE

LEISURE

THE AQUATIC LUXURY



STOCK IMAGE

BUSINESS

THE FORMAL ARENA



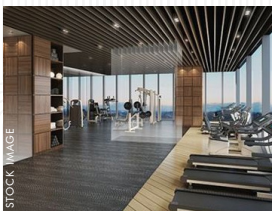
STOCK IMAGE



Wellness

The Healing Zone





Cardio

Amphitheatre

Climbing Wall

Sunken Ponds

Outdoor Classes

Yoga

Banquet Hall

Games Area

Banquet Lawn

Playground

Spa

Skating Area

Water Feature

Meditation Zone

Swimming Pool

Hamмам

Steam Room

Sauna

Ice Room

Garden

Outdoor Fitness

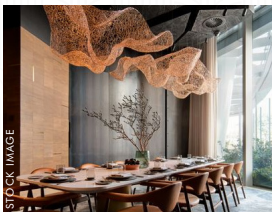
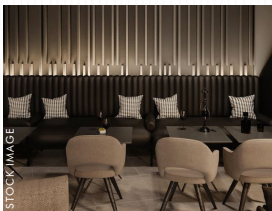
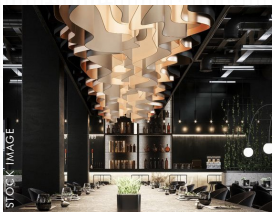
Cloud Meditation



Leisure

The Aquatic Luxury





Banquet Lawn

Island Dining

Cafe

Games Room

Music Room

Art Room

Outdoor Sculpture

Plan

Virtual Gaming Room

Arcade Room

Lounge

Karaoke Room

Water Restaurants

Green Pods

Sky Dining

Restaurant

Water Feature

Waterfall



Alt-Brew Café



ARTISTIC IMPRESSION

Step into a realm of exquisite flavors and unparalleled elegance at AltBrew - our cafe, where each sip and bite ignites the senses and transports you to a world of flamboyant indulgence.





ARTISTIC IMPRESSION

Water Lagoon

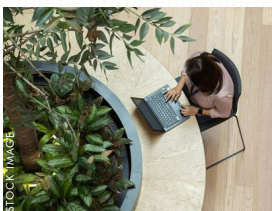
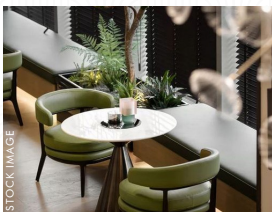
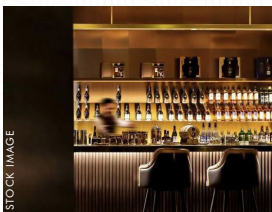
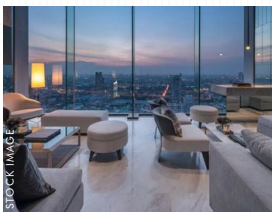
In front of club merges with landscape
complements the vibe of club design.



Business

The Formal Arena





Workspaces

Informal Meeting

Agile Working

Banquet

Pre-function Area

Board Room

Business Centre

Lounge

Library

Relaxation Garden

Meeting Room

Conference Room

Sky Lounge

Sky Bar

Outdoor Bar

Executive Bar

Outdoor Lounge Area

Co-working Area

Executive Lounge



State-Of-The-Art Sports Club



Own Your Piece Of
Sky At The Most
Coveted Location Of
Gurugram





M3M
Our Expertise. Your Joy.

M/S Manglam Multiplex Pvt. Ltd
(CIN: U70109HR2020PTC090042)

Registered Office Address:

Unit No. SB/C/2L/Office/017A, M3M Urbana, Sector 67, Gurugram Manesar
Urban Complex, Gurugram 122102, Haryana, India

Sales Gallery:

Alt Lounge, Level 39, M3M IFC, Sector 66, Golf Course Road Extn., Gurugram 122101

Project Site:

M3M Altitude, Sector 65, Golf Course Road Extn., Gurugram 122101

Disclaimer: The information contained in this Brochure ("Brochure"), is merely informative and unless otherwise expressly provided, all contents are for general information purposes. Nothing contained herein intends to constitute a legal offer / invitation to offer or sale. The reader hereby accepts and agrees to be bound by and comply with these legal terms of use. This Brochure contains proprietary information, exclusive to the Promoter Company. | The contents, and any information or opinion on the project, if any, may not be reproduced, transmitted (by any means), modified, sold, circulated, shared or otherwise provided, in whole or in part, to any other person or entity store, archive or in any other way put to use or used for any public or commercial purpose without the Promoter's explicit consent. Promoter reserves its right to revoke any such consent, without prior notice. Any unauthorized review, use, disclosure, dissemination, forwarding, printing or copying of any page, information, Brochure or any action taken upon reliance on the information is strictly prohibited and may be unlawful and the Promoter reserves its rights both in law and equity to take appropriate action in this regard. | The information and contents herein, including all designs, layouts, specifications, plans, dimensions, measurements, locations, services, images, landscape, facilities, amenities & infrastructure etc. are merely indicative, illustrative; and not to scale and are indicative of the envisaged developments; and subject to revision by the Promoter as may be required and approved by the Competent Authorities. Revision, alteration, modification, addition, deletion, substitution or recast, if any, may be necessary during construction. All areas and figures are indicative and the units mentioned herein are subject to availability. | Recipients/Viewers are advised to exercise their discretion in relying on the information shown/provided and are requested to verify all the details, including area, amenities, services, terms of sales and payments and other relevant terms independently with the Promoter Company, have understanding of the same and take appropriate independent advice prior to concluding any decision for buying any unit(s) in the Project. | "M3M Altitude" is a residential Project upon 11290.73 sq. mtrs. or 2.79 acres of land out of the Total Licensed Land admeasuring 60.25 acres or 2438231 sq. mtrs. (Licensed Land) situated in Village Maidawas, Sector-65, Gurugram, Manesar Urban Complex, District Gurugram, Haryana being developed by M/s Manglam Multiplex Private Limited, Director, Town and Country Planning, Haryana, Chandigarh ("DTCP") has granted license bearing no. 234 of 2007 dated 16.10.2007; 52 of 2009 dated 28.08.2009; 35 of 2010 dated 06.05.2010 and 228 of 2023 dated 31.10.2023 for the purpose of setting up of a Residential Group Housing Colony to be developed in multiple phases for the Licensed Land. The Project is duly registered with the Haryana Real Estate Regulatory Authority at Gurugram vide Regn. No. RC/REP/HARERA/GGM/821/553/2024/48 dated 29.04.2024. Copies of approvals are available for inspection at Promoter Company corporate office. | The use of word 'M3M' shall in no manner be construed or interpreted as M3M India Pvt. Ltd. being the Promoter and / or Developer. Dispute with regard to the interpretation of information will be subject to the exclusive jurisdiction of District Courts at Gurugram, Haryana and Hon'ble High Court of Punjab & Haryana, India.