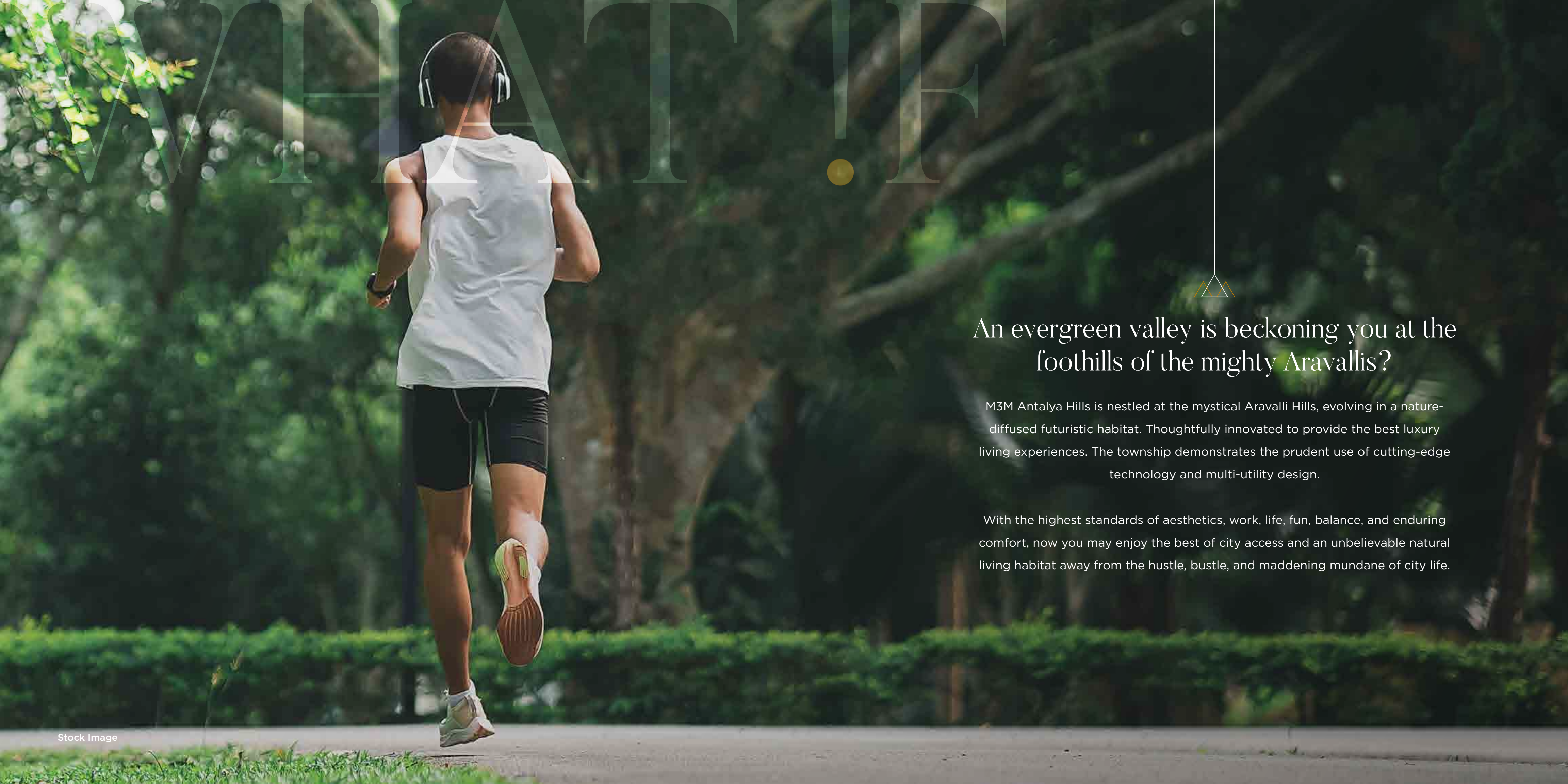


M3M ANTALYA HILLS PHASE-I
PROMOTER NAME:- LOON LAND DEVELOPMENT LIMITED
REG. NO.:- RC/REP/HARERA/GGM/650/382/2022/125, DATED 23.12.2022
M3M ANTALYA HILLS PHASE-II
PROMOTER NAME:- LOON LAND DEVELOPMENT LIMITED & OTHERS
REG. NO.:- RC/REP/HARERA/GGM/662/394/2023/06, DATED 12.01.2023

M3M
ANTALYA
HILLS
A TRIBUTE TO NATURE

SECTOR 79, GURUGRAM



Stock Image

An evergreen valley is beckoning you at the foothills of the mighty Aravallis?

M3M Antalya Hills is nestled at the mystical Aravalli Hills, evolving in a nature-diffused futuristic habitat. Thoughtfully innovated to provide the best luxury living experiences. The township demonstrates the prudent use of cutting-edge technology and multi-utility design.

With the highest standards of aesthetics, work, life, fun, balance, and enduring comfort, now you may enjoy the best of city access and an unbelievable natural living habitat away from the hustle, bustle, and maddening mundane of city life.



DESIRE



This integrated natural habitat has everything you dreamt of

Clean air, green grass, blue skies, abundance of flora and fauna, landscapes with limitless nature caressed, future-proof special amenities, and much more. Catering to one and all without a generation gap. Providing endless experiences that ensure a lifecycle of inner bliss.

Now, you get to live amidst nature while instantly connected to the realms of city life.



Stock Image



Best of facilities within minutes

RECREATION

- Cricket Stadium
- Golden Greens Golf & Resorts Limited
- Classic Golf & Country Club
- Jungle Safari & Trails

CONNECTIVITY

- NH8
- KMP Expressway
- ISBT, Gurgaon
- IGI Airport, Delhi
- SPR
- Golf Course Road Extn.

EDUCATION

- National Brain Research Centre
- Government Polytechnic, Manesar
- DPS, Manesar
- Amity University, Gurgaon
- Kunskapsskolan School, Gurgaon

An enviable location. An incredible lifestyle

Office in minutes. Home in minutes. School and college in minutes. Airport in minutes. The value time you save is the value time spent. Bonding with family and having unlimited fun with friends and caring for your near and dear ones.

Others lead a life. But at M3M Antalya Hills, a glorious life elevates you above and beyond, 24 X 7, 365 days of the year.

India's First Smart & Green Highway
- **KMP Expressway**

India's First Operational Industrial Corridor
- **DMIC**

India's First Orbital Rail Corridor
- **Haryana Rail Orbital Corridor**

India's First Airport to Run on Hydro and Solar Power
- **IGI Airport**















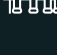


Where a healthy life and lifestyle comes guaranteed

Nothing in life is taken for granted. Here is the golden chance to recharge and reinvent a vibrant life through a holistic green lifestyle. A life where the five senses experience the value of earth, water, air, and sunlight.

Now is the time to make the right decision for you and your family. Reinvent your life!



-  Multiple Clubhouses
-  Community Gardens
-  Swimming Pool
-  Jogging Tracks
-  Multipurpose Halls
-  Mini Theatre
-  Pet-friendly Parks
-  Fitness Centre
-  Cafeteria
-  Spa and Sauna
-  Kids Play Zone
-  Elderly Parks
-  Dedicated green for every block



Artistic Impression

The state-of-the-art amenities will floor you. Luxurious lifestyle will elevate you



Artistic Impression



Artistic Impression



Artistic Impression

A BETTER LIFE

Where Fun & Frolic Begins

WALKING TRACK | KID'S PLAY AREA | COMMUNITY GARDEN



Experience Rich Luxury Living

WAKE-UP TO THE EVERLASTING VIEW OF THE ARAVALLI HILLS EVERY DAY



Explore Your Passions, Savour Memories

MOVE UP YOUR LIFE AT THE WELL-APPOINTED CLUB

PAVILION

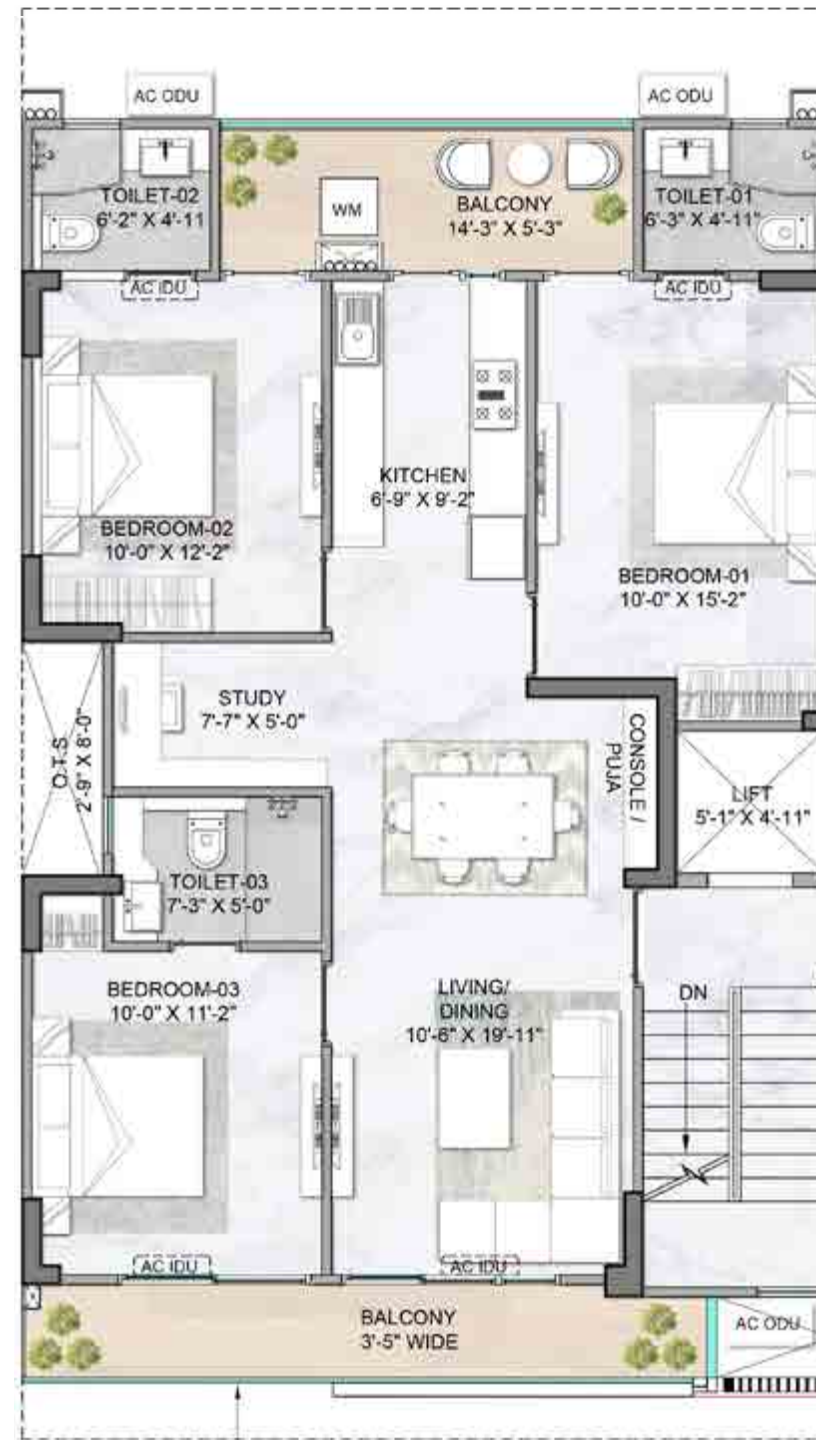


Unit Plan 3.5 BHK

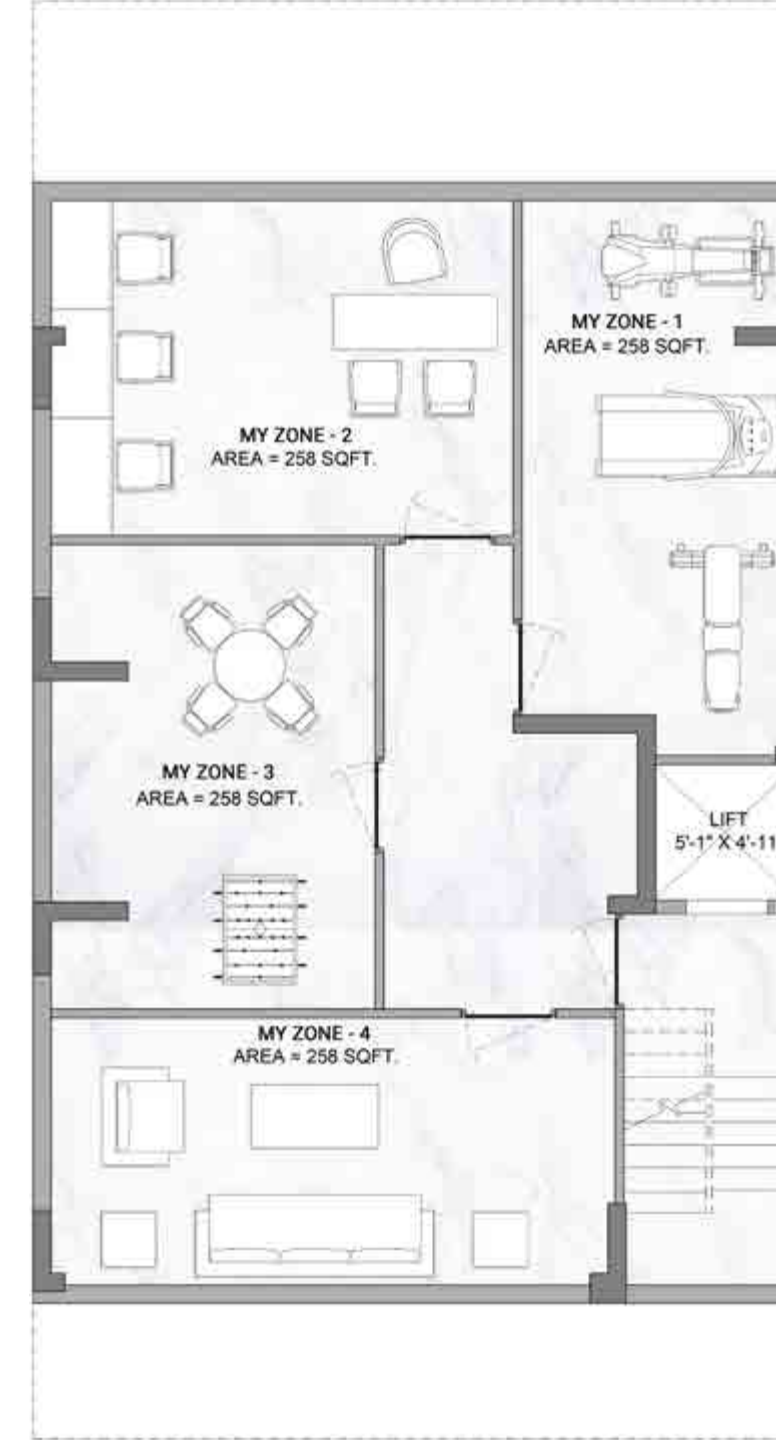
3.5 BHK



STILT FLOOR



TYPICAL FLOOR



MY ZONE FLOOR



MY AER LOUNGE FLOOR

Disclaimer: Unit Plan, as the situation and circumstances so warrant, shall be read in conjunction with (i) License No. 194 and 195 of 2022 both dated 29/11/2022 and (ii) building plans are approved by DTCP (including any future revisions thereof). It should be noted that the information contained herein may have certain technical inaccuracies or typographical errors, and while the Promoter Company does not doubt the Unit Plan's accuracy, no guarantee or warranty or representation as to its accuracy and completeness is being made by the Promoter Company. Unit Plan(s) is/ are intended to give a specific view of the layout only. Minor inaccuracies in square footage and inaccuracies in layout and room dimensions as shown on any Plan will not excuse the Allottee from completing the purchase of the Unit without abatement in price and/ or recourse against the Promoter Company. Further, Site plans, landscaping, dimensions and Specification(s) are not deemed or intended to form part of any contract or warranty unless specifically incorporated in writing into the contract and signed by the parties to it. For the purpose of this Project, 1 Hect. = 2.471 Acres, 1 Acre = 4840 sq.yds. or 4046.864 sq. mtrs., 1 sq.mtr. = 10.764 sq.ft.

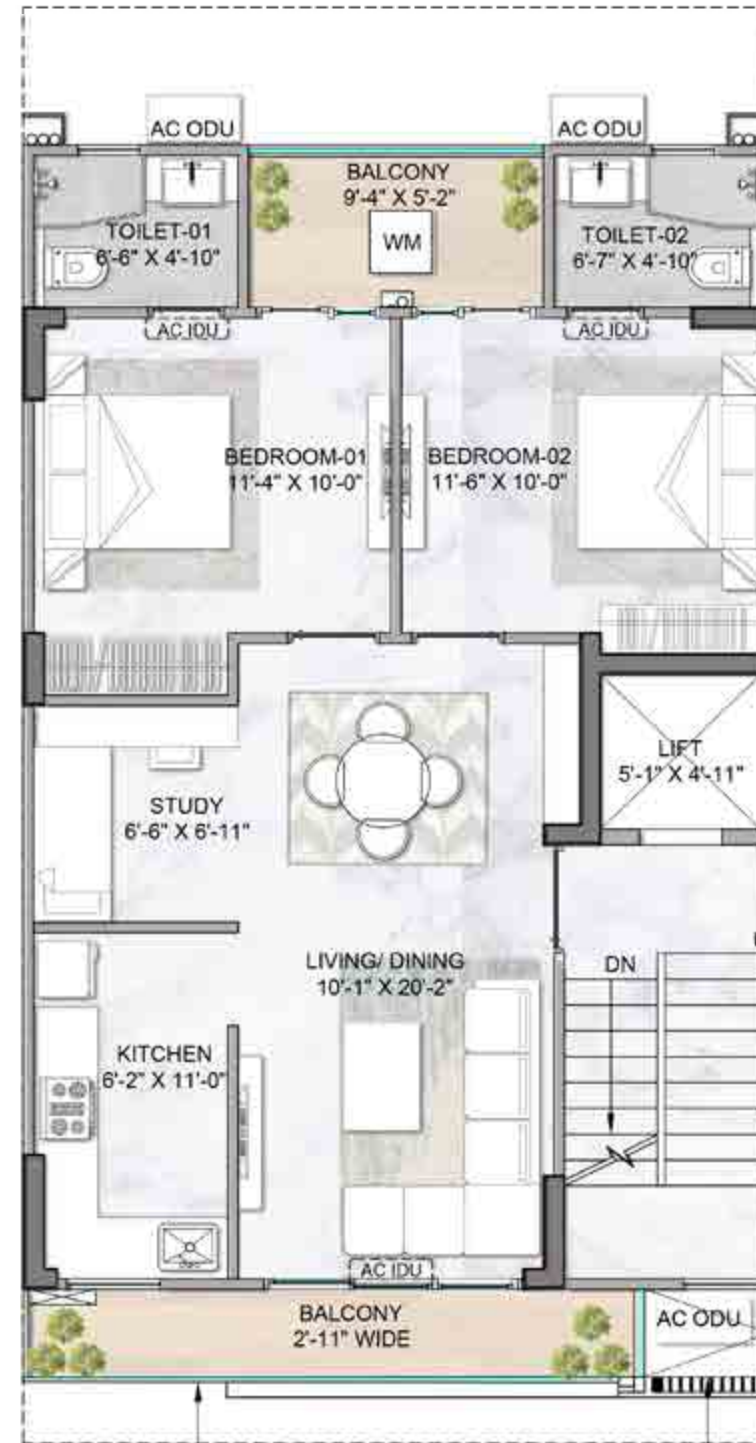
Disclaimer: Unit Plan, as the situation and circumstances so warrant, shall be read in conjunction with (i) License No. 194 and 195 of 2022 both dated 29/11/2022 and (ii) building plans are approved by DTCP (including any future revisions thereof). It should be noted that the information contained herein may have certain technical inaccuracies or typographical errors, and while the Promoter Company does not doubt the Unit Plan's accuracy, no guarantee or warranty or representation as to its accuracy and completeness is being made by the Promoter Company. Unit Plan(s) is/ are intended to give a specific view of the layout only. Minor inaccuracies in square footage and inaccuracies in layout and room dimensions as shown on any Plan will not excuse the Allottee from completing the purchase of the Unit without abatement in price and/ or recourse against the Promoter Company. Further, Site plans, landscaping, dimensions and Specification(s) are not deemed or intended to form part of any contract or warranty unless specifically incorporated in writing into the contract and signed by the parties to it. For the purpose of this Project, 1 Hect. = 2.471 Acres, 1 Acre = 4840 sq.yds. or 4046.864 sq. mtrs., 1 sq.mtr. = 10.764 sq.ft.

Unit Plan 2.5 BHK

2.5 BHK



STILT FLOOR



TYPICAL FLOOR



MY ZONE FLOOR



MY AER LOUNGE FLOOR

Disclaimer: Unit Plan, as the situation and circumstances so warrant, shall be read in conjunction with (i) License No. 194 and 195 of 2022 both dated 29/11/2022 and (ii) building plans are approved by DTCP (including any future revisions thereof). It should be noted that the information contained herein may have certain technical inaccuracies or typographical errors, and while the Promoter Company does not doubt the Unit Plan's accuracy, no guarantee or warranty or representation as to its accuracy and completeness is being made by the Promoter Company. Unit Plan(s) is/ are intended to give a specific view of the layout only. Minor inaccuracies in square footage and inaccuracies in layout and room dimensions as shown on any Plan will not excuse the Allottee from completing the purchase of the Unit without abatement in price and/ or recourse against the Promoter Company. Further, Site plans, landscaping, dimensions and Specification(s) are not deemed or intended to form part of any contract or warranty unless specifically incorporated in writing into the contract and signed by the parties to it. For the purpose of this Project, 1 Hect. = 2.471 Acres, 1 Acre = 4840 sq.yds. or 4046.864 sq. mtrs., 1 sq.mtr. = 10.764 sq.ft.

Disclaimer: Unit Plan, as the situation and circumstances so warrant, shall be read in conjunction with (i) License No. 194 and 195 of 2022 both dated 29/11/2022 and (ii) building plans are approved by DTCP (including any future revisions thereof). It should be noted that the information contained herein may have certain technical inaccuracies or typographical errors, and while the Promoter Company does not doubt the Unit Plan's accuracy, no guarantee or warranty or representation as to its accuracy and completeness is being made by the Promoter Company. Unit Plan(s) is/ are intended to give a specific view of the layout only. Minor inaccuracies in square footage and inaccuracies in layout and room dimensions as shown on any Plan will not excuse the Allottee from completing the purchase of the Unit without abatement in price and/ or recourse against the Promoter Company. Further, Site plans, landscaping, dimensions and Specification(s) are not deemed or intended to form part of any contract or warranty unless specifically incorporated in writing into the contract and signed by the parties to it. For the purpose of this Project, 1 Hect. = 2.471 Acres, 1 Acre = 4840 sq.yds. or 4046.864 sq. mtrs., 1 sq.mtr. = 10.764 sq.ft.



M3M
Our Expertise. Your Joy.

CALL: +91 - 1800 123 3333 | 80689 70077 | WEB: WWW.M3MINDIA.COM | MAIL: FEEDBACK@M3MINDIA.COM

M/S LOON LAND DEVELOPMENT LIMITED & OTHERS
(CIN: U70109DL2014PLC267465)

Registered Office Address

Office No. 1221-A, Devika
Tower, 12th Floor, 6, Nehru
Place, New Delhi - 110018, India

Sales Gallery

M3M Gallery 82, Sector 82,
Gurugram - 122004,
Haryana, India

CRM Lounge

10th Floor, 'M3M Urbana Business Park',
Tower A, Sector - 67, Golf Course Road
(Extn.), Gurugram - 122101, Haryana, India

Project Site

M3M Antalya Hills,
Sector - 79, Gurugram
- 122051, Haryana, India

DISCLAIMER: The contents, information, images and visuals or sketches including landscaping in this brochure are only an architect's impression, representative images or artistic renderings for general informational purposes only. Nothing contained on the brochure intends to constitute a legal offer and does not form part of any legally binding agreement and/or commitment of any nature. Every endeavour has been made to keep the information updated. However, Promoter Company make no representations or warranties of any kind, express or implied, about the completeness, accuracy, reliability, suitability or availability with respect to the Brochure or the information, specification, or related graphics contained in the Brochure for any purpose. Recipient(s)/viewer(s) accessing this Brochure are advised to exercise their discretion in relying on the information shown/provided and are requested to verify all the details, including area, amenities, services, terms of sales and payments and other relevant terms independently with the Promoter Company, have thorough understanding of the same and take appropriate advice prior to concluding any decision for buying any Unit(s) in the Project. "M3M Antalya Hills Phase-I" is a part of DDJAY Affordable Residential Plotted Colony registered with Haryana Real Estate Regulatory Authority vide Regn. No. RC/REP/HARERA/GGM/649/381/2022/124, dated 23.12.2022 for the Affordable Plotted Colony and regn. No. RC/REP/HARERA/GGM/650/382/2022/125, dated 23.12.2022 for the development of Independent Residential Floors, being developed on licensed land admeasuring 35252.571 sq. mts. or 8.711 acres situated at Village Naurangpur, Sector - 79, Gurugram Manesar Urban Complex, District Gurugram (Haryana), by M/s. Loon Land Development Limited under License bearing no. 194 of 2022 dated 29/11/2022 granted in favour of M/s. Loon Land Development Limited under Haryana Development & Regulation of Urban Areas Act, 1975 and the Rules 1976. "M3M Antalya Hills Phase-II" is a part of DDJAY Affordable Residential Plotted Colony registered with Haryana Real Estate Regulatory Authority vide Regn. No. RC/REP/HARERA/GGM/661/393/2023/05, dated 12.01.2023 for the Affordable Plotted Colony and regn. No. RC/REP/HARERA/GGM/662/394/2023/06, dated 12.01.2023 for the development of Independent Residential Floors, being developed on part of the licensed land admeasuring 182756.04sq. mts. or 45.1 acres situated at Village Naurangpur, Sector - 79 and 79B, Gurugram Manesar Urban Complex, District Gurugram (Haryana), by M/s. Loon Land Development Limited under License bearing no. 195 of 2022 dated 29/11/2022 granted in favour of M/s. Loon Land Development Limited & Others under Haryana Development & Regulation of Urban Areas Act, 1975 and the Rules 1976. The use of word 'M3M' shall in no manner be construed or interpreted as M3M India Pvt. Ltd. being the Promoter and/or Developer of the said Project. Dispute with regard to the interpretation of information will be subject to the exclusive jurisdiction of District Courts at Gurugram, Haryana and Hon'ble High Court of Punjab & Haryana at Chandigarh, India. 1 Hect. = 2.471 Acres, 1 Acres = 4840 sq. yds or 4046.86 sq. mtrs., 1 sq. mtrs. = 10.764 sq. ft.