







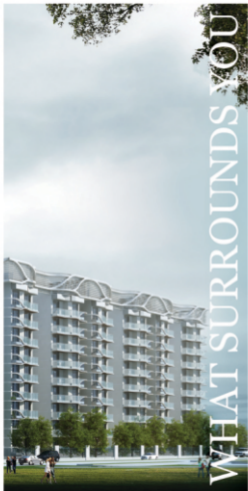
**LIVE**

THE WAY YOU ALWAYS WANTED.

— ∞ —  
ORCHESTRATED TO  
**PERFECTION.**  
— ∞ —







SHOULD INDULGE YOU, INTEREST YOU AND INSPIRE YOU.

If you're one of the fortunate souls who've been everywhere and done everything, wouldn't it be perfect to come home to a place that captures your adventurous spirit, cool sophistication and joie de vivre?

**Welcome home to Paras Dew's.**

This is your opportunity to have all that you've ever wanted in your ideal home – breathtaking views, exceptional architecture, the finest leisure facilities and ample green spaces – all within a peaceful, secure environment.

# CONFORMITY IS NOT SPOKEN HERE.

Some architectural designs stand the test of time and become iconic. They are the buildings that attest to the good taste and rare aesthetic of the architect, designer, developer and ultimately, the person who chooses to inhabit them. Such will be the legacy of Paras Dew's. This exclusive residential community will open the doors to a new style of living in Gurgaon for you and your family, one that has never been experienced before.







# EVERYDAY, A FRESH ADVENTURE.

A wide variety of natural attractions are on your doorstep at Paras Dew's. Finally, you will have the room to grow and the space to live life to the full. From walking and jogging along the winding tree-lined tracks, to playing with your children in one of the nearby parks, or simply relaxing and unwinding with a good book in a shady corner, every day will be a fresh adventure at Paras Dew's.







# SECLUDED YET CLOSE TO IT ALL.

Designed by a team of international architects, Paras Dew's will create a community that combines India's traditional way of life with the very best international living standards. From your home in Paras Dew's, you are close to everything, yet far from the usual.

- 
- Conveniently situated on Dwarka Expressway, Sector 106, Gurgaon
  - 24 mtr wide approach road
  - Surrounded by the lush green and scenic beauty
  - City can be classified as Dwarka Subcity
  - All existing amenities like Schools, International Airport and Entertainment Hubs, just at drive of 15 mins











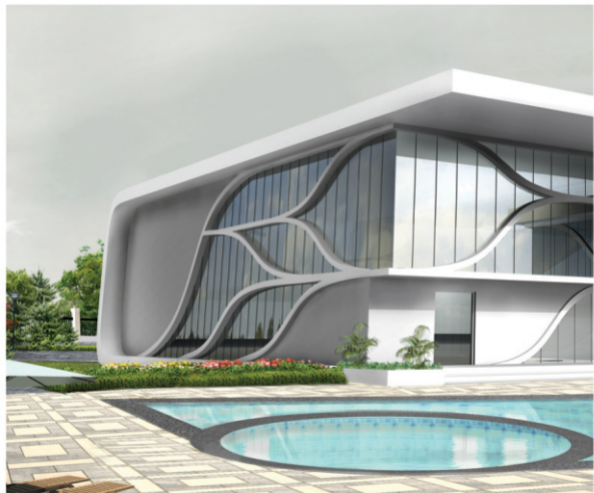
# MORE THAN YOU HAD DREAMT OF.

Out here, there's more than your dream home that awaits you. This residential community comes equipped with all the modern amenities you want right next to your home.

Paras Dew's promises you and your family the space, comfort and security you deserve

- Firm alarm/detection and fire-fighting system
- CCTV coverage for entry lounge, entry/exit and across entire development
- Communication system linked to each unit
- Solid waste management through efficient collection and transportation system
- 100 % of groundwater recharged through rainwater harvesting systems
- Vehicle and pedestrian access at entryways is restricted with boom gates
- Multi-tier security • Ample undercover parking for residents • Primary school
- 24 x 7 treated water supply • 100% Power Back-Up • Maintenance staff

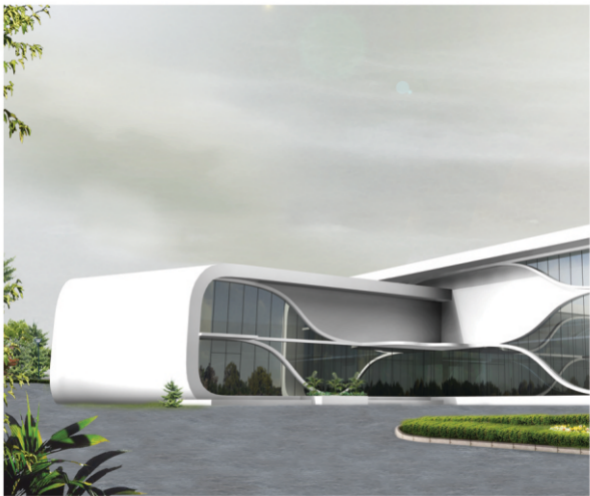






# MAINTAIN A BALANCED LIFE.

Paras Dew's provides many opportunities for indoor and outdoor recreation. At the heart of it all, The Dew's club is an ideal gathering place for visiting friends and socializing with the neighbors. After all, why should the moments you spend here seem any less than a dream?





## YOUR PICK OF THE LEISURE FACILITIES.

- Exclusive club house for healthy & active lifestyle
- Children's play area
- Swimming pool with splash pool for kids
- Jogging and walking tracks
- Yoga, aerobics court and spa
- Squash court and badminton court
- Amphitheater and convenience stores
- Multi-purpose hall

# THE IDEAL LOCATION

Sec 106, Dwarka Expressway, Gurgaon











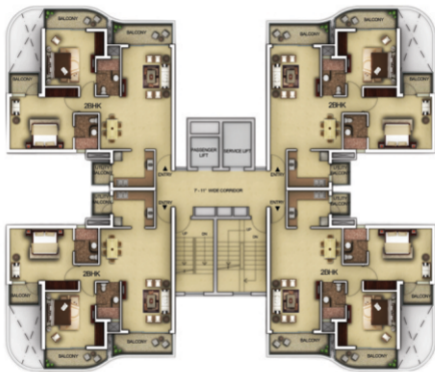
**LEGENDS:**

1. Main entry & exit
2. Water feature
3. Entry to basement
4. Exit from basement
5. Club house
6. Shopping
7. Drop off
8. Swimming pool
9. Kid's play area
10. Nursery school
11. EWS apartment
12. Lawn
13. Badminton court





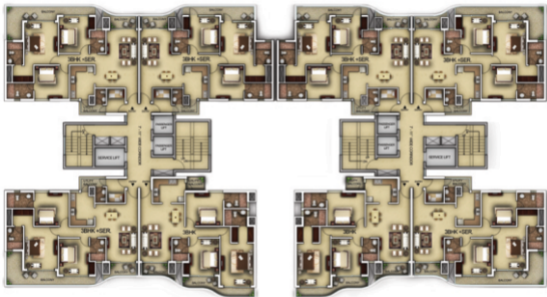
PLANS FOR  
**YOUR**  
EXTRAORDINARY  
**NEW**  
LIFESTYLE.



2 BHK Cluster Plan  
Tower: E & F



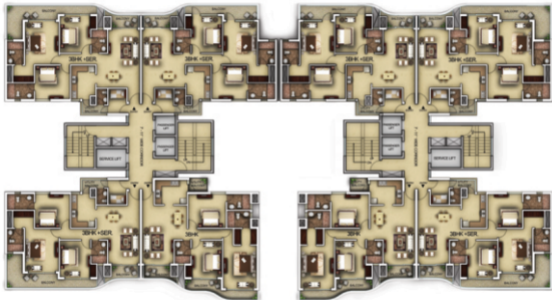
2 BHK Typical Unit Plan, Tower: E & F  
 Super Area: 1385 sq.ft.



3 BHK + (3BHK + Servant) Cluster Plan  
Tower: B & C



3 BHK Typical Unit Plan, Tower: B & C  
 Super Area: 1665 sq.ft.

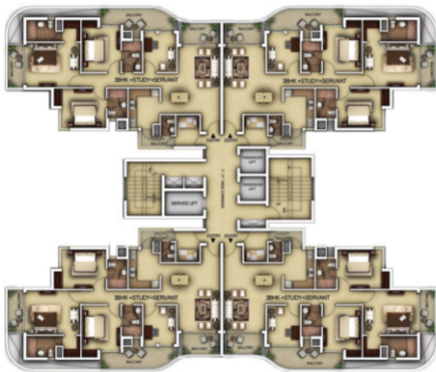


3 BHK + (3BHK + Servant) Cluster Plan  
Tower: B & C





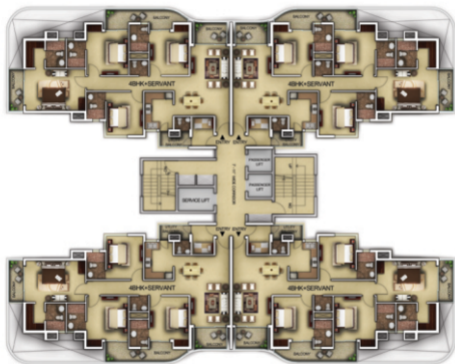
3 BHK + Servant Typical Unit Plan, Tower: B & C  
 Super Area: 1760 sq.ft.



3 BHK + Study + Servant Cluster Plan  
Tower: A



3 BHK + Servant + Study Typical Unit Plan, Tower: A  
 Super Area: 1900 sq.ft.



4 BHK + Servant Cluster Plan  
Tower: D



4 BHK + Servant Typical Unit Plan, Tower: D  
 Super Area: 2275 sq.ft.



Lower Level Penthouse, Tower: D  
 Super Area: 4500 sq.ft.



Upper Level Penthouse  
Tower: D







**Specifications.** It's not just a list, it's a carefully selected collection of can't-live-withouts.



**Living Room / Dining Area**

Flooring	:	Imported marble/ engineer stone/ aglow stone
Wall	:	Plastic emulsion
Ceiling	:	Oil bond distemper
<b>Door</b>		
Internal	:	Seasonal hardwood frames & Laminated shutter
External	:	UPVC/ Powder coated aluminium doors
Windows/ Glazing	:	Aluminium/ UPVC
Others	:	Split AC unit
<b>Electrical</b>	:	Three phase supply with independent meter, 100% Power Backup



**Master Bedroom**

Flooring	:	Laminated wooden flooring
Wall	:	Plastic emulsion
Ceiling	:	Oil bond distemper
<b>Door</b>		
Internal	:	Seasonal hardwood frames & Laminated shutter
External	:	UPVC/ Powder coated aluminium doors
Windows/ Glazing	:	Aluminium/ UPVC
Others	:	Split AC unit
<b>Electrical</b>	:	Three phase supply with independent meter, 100% Power Backup



**Other Bedroom**

Flooring	:	Laminated wooden flooring
Wall	:	Plastic emulsion
Ceiling	:	Oil bond distemper
<b>Door</b>		
Internal	:	Seasonal hardwood frames & Laminated shutter
External	:	UPVC/ Powder coated aluminium doors
Windows/ Glazing	:	Aluminium/ UPVC
Others	:	Split AC unit
<b>Electrical</b>	:	Three phase supply with independent meter, 100% Power Backup



**Kitchen**

Flooring	:	Anti skid tiles
Wall	:	Ceramic tiles
Ceiling	:	Oil bond distemper
<b>Door</b>		
Internal	:	Seasonal hardwood frames & Laminated shutter
External	:	UPVC/ Powder coated aluminium doors
Windows/ Glazing	:	Aluminium/ UPVC
Others	:	Stone counter with SS sink
<b>Electrical</b>	:	Three phase supply with independent meter, 100% Power Backup

**Toilets**

Flooring	:	Anti skid tiles
Wall	:	Ceramic tiles
Ceiling	:	Oil bond distemper
<b>Door</b>		
Internal	:	Seasonal hardwood frames & Laminated shutter
Windows/ Glazing	:	Aluminium/ UPVC
Others	:	Stone counter with wash basin, EWC & CP fittings
<b>Electrical</b>	:	Three phase supply with independent meter, 100% Power Backup

**Utility**

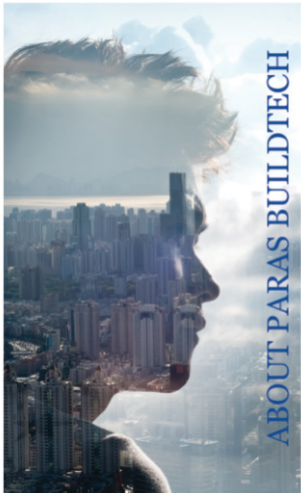
Flooring	:	Anti skid tiles
Wall	:	External paint
Ceiling	:	Oil bond distemper
<b>Door</b>		
Internal	:	Seasonal hardwood frames & Laminated shutter
External	:	UPVC/ Powder coated aluminium doors
Windows/ Glazing	:	Aluminium/ UPVC
<b>Electrical</b>	:	Three phase supply with independent meter, 100% Power Backup

**Balcony**

Flooring	:	Anti skid tiles
Wall	:	External paint
Ceiling	:	Oil bond distemper
<b>Door</b>		
Internal	:	Seasonal hardwood frames & Laminated shutter
External	:	UPVC/ Powder coated aluminium doors
Windows/ Glazing	:	Aluminium/ UPVC
<b>Electrical</b>	:	Three phase supply with independent meter, 100% Power Backup

**Servant Room**

Flooring	:	Ceramic tiles
Wall	:	Oil bond distemper
Ceiling	:	Oil bond distemper
<b>Door</b>		
Internal	:	Seasonal hardwood frames & Laminated shutter
External	:	UPVC/ Powder coated aluminium doors
Windows/ Glazing	:	Aluminium/ UPVC
<b>Electrical</b>	:	Three phase supply with independent meter, 100% Power Backup



## ABOUT PARAS BUILDTech



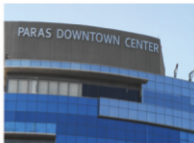
Paras Buildtech India Pvt. Ltd. is a progressive, future-focused, Indian real estate company. With a high level of integrity and utmost dedication, we've climbed our way to being recognised as one of the most respected real estate developers in India. A pioneer in conceiving and executing large sophisticated real estate commercial, retail and residential projects.



**PARAS TRINITY**



**PARAS TWIN TOWERS**



**PARAS DOWNTOWN CENTER**



**PARAS TRADE CENTRE**



**PARAS DOWNTOWN SQUARE**



**PARAS PANORAMA**



**PARAS TIERREA**



**PARAS SEASONS**



**PARAS IRENE**





**Sepset Properties Pvt. Ltd.**

Paras Twin Towers, 11<sup>th</sup> Floor, Tower 'B', Golf Course Road, Sector - 54, Gurgaon - 122002 Haryana Phone: +91 124 4561500 Fax: +91 124 4561540

**Disclaimer:** • In the interest of maintaining high standards, all floor plans, layout plans, areas, dimensions and specifications are indicative and subject to change as decided by the company or by any competent authority. Soft furnishing, cupboards, furniture and galeries are not part of the offering.

• This does not constitute a legal offer. All site plans, floor plans, areas, dimensions, prices and specifications etc. are subject to change till final completion of the project. All images are an artistic conceptualization and do not purport to replicate the exact products.

